



SCI-BONO DISCOVERY CENTRE NPC

Tel: +27 11 639 8400 | Fax: +27 11 832 3360 | www.sci-bono.co.za
C/o Miriam Makeba & Helen Joseph Streets | Newtown | Johannesburg
PO Box 61882 | Marshalltown | 2107

Company registration: 2004/010183/08 | VAT no: 473 021 6290
PBO reference no: 930 014 449 | NPO Registration: 056-334-NPO

**REQUEST FOR PROPOSALS (RFP):
SUPPLY, DELIVERY AND INSTALLATION OF A “TURN KEY” CLIMBING WALL**

1. DETAILS OF THE RFB

RFB NO	CS/SCM/EXH/R17-18/50
RFB FOR	Supply, Delivery and Installation of a “Turn Key” Climbing Wall
ADVERTISEMENT DATE	09 October 2017
COMPULSORY BRIEFING	17 October 2017 @ 11:00am
SUBMISSION DEADLINE	23 October 2017 @ 12:00pm
RFB SUBMISSION DATE	Corner Miriam Makeba & Helen Joseph Streets, Newtown, Johannesburg, 2017

2. BACKGROUND INFORMATION

- 2.1. The Sci-Bono Discovery Centre is an independent Non Profit Company set up by the Gauteng Department of Education. It is a flagship science centre located in Newtown, Johannesburg. Sci-Bono envisions a society with the capacity to compete in the global world of science and technology and that is equipped with the skills, attitudes and values needed to improve the quality of life of all South Africans. It also works closely with the Gauteng Department of Education (GDE), to enhance curriculum delivery in schools.

3. PURPOSE

- 3.1 The purpose of this Request for Proposals (RFP) is to solicit bids from reputable suppliers for the supply, delivery and installation of a “Turn Key” Climbing Wall Solution. The service provider must have a proper infrastructure, facilitation, provide training for staff and servicing for 12 months from the date of commissioning.

4. SPECIFICATIONS, SCOPE OF WORK AND DELIVERABLES

4.1 Specialised, climbing wall construction

- 4.1.1 In order to accommodate the climbing wall infrastructure, the standard of construction, requires a superior degree of knowledge, experience and understanding of not only the facilitation and composition of the climbing structure.
- 4.1.2 More, importantly, a comprehensive understanding of the nature of the climbing wall industry and the extremely high standards and safety procedures demanded of this specialised activity.
- 4.1.3 The proposal is based on the two columns (No.1 see drawing No.3) closed on the top with an inspection door to access the down pipe and services. The structure should not interfere with access to Glass inspection panels. Each column must have 4 climbing routes. This wall must be one of the largest in Gauteng Province with a height of 7.2 Meters and a total climbing surface area of +- 140 Sq. /M. It must be able to facilitate groups of eight climbers every 5 – 10 minutes.

4.2 Technique, background and specifications

- 4.2.1 The climbing wall structure proposed is unique in its design, constructed to ‘wrap’ around the internal support columns, so that no entrenched fixing will be required or damage undertaken to neither columns nor floor.
- 4.2.2 The full climbing wall infrastructure must be guaranteed lifespan of 10 years subject to minor maintenance and route changes.

4.3 Support framework

- 4.3.1 In order to accommodate the climbing wall panels, a galvanized steel or powder-coated framework, custom engineered, around each internal support column, (See attached drawings No: 4.9.1, 4.9.2 & 4.9.3).
- 4.3.2 Due to the nature of the steel framework, final sign off and an Engineers' certification registered with the Engineers body must be provided. All modifications to steel work, must be approved before completion of wall panelling stage.
- 4.3.3 All welds certified and copy of welder's certificate to be attached

4.4 Climbing wall panelling

- 4.4.1 The climbing wall panels must be constructed from 18mm (minimum standard) straight grain, Birch Ply (or equivalent). The number of panels must be sized accordingly to the structures requirements. For this project the recommended size is:
 - (a) 3.6 M, (wide) by 7.3M Textured 18mm WISE Birch ply panels
 - (b) All dimensions must be checked on site
 - (c) Each panel must be fitted with 68 holes, per panel allocated to take 68 T – nuts, per panel
 - (d) Colour finish, to be agreed, subject to final design
- 4.4.2 The Birch Ply panels must be sealed with a double coat of polyurethane epoxy. It must then subjected to a secondary 'broadcast' coat, consisting of fine silver glass sand, until density and desired thickness is achieved
- 4.4.3 Coating must be:
 - (a) High impact strength, very difficult to tear or crack; and
 - (b) Less climb markings, boot scuffs, must be able to be cleaned off
- 4.4.4 The integration of high quality, fully illustrated images and brand logos, on the climbing panels must be explored.

4.5 Equipment (submit a separate quote)

- 4.5.1 All climbing gear and equipment must adhere to all European (CE) and American (UIAA) safety standards, and must be supplied with certification certificates and log books.
- 4.5.2 Rope to be "Beal" 10.5 Static rope or similar

4.6 Climbing holds

- 4.6.1 A climbing hold is a shaped grip, attached to the climbing wall. Climbers can grab or step up on to it. On most walls, climbing grips are set in paths, known as routes, by specially trained climbers or coaches.
- 4.6.2 Routes must be laid out for different levels of climbers with Routes designated on climber experience, from beginner to advance and upwards.

4.7 Grips or holds

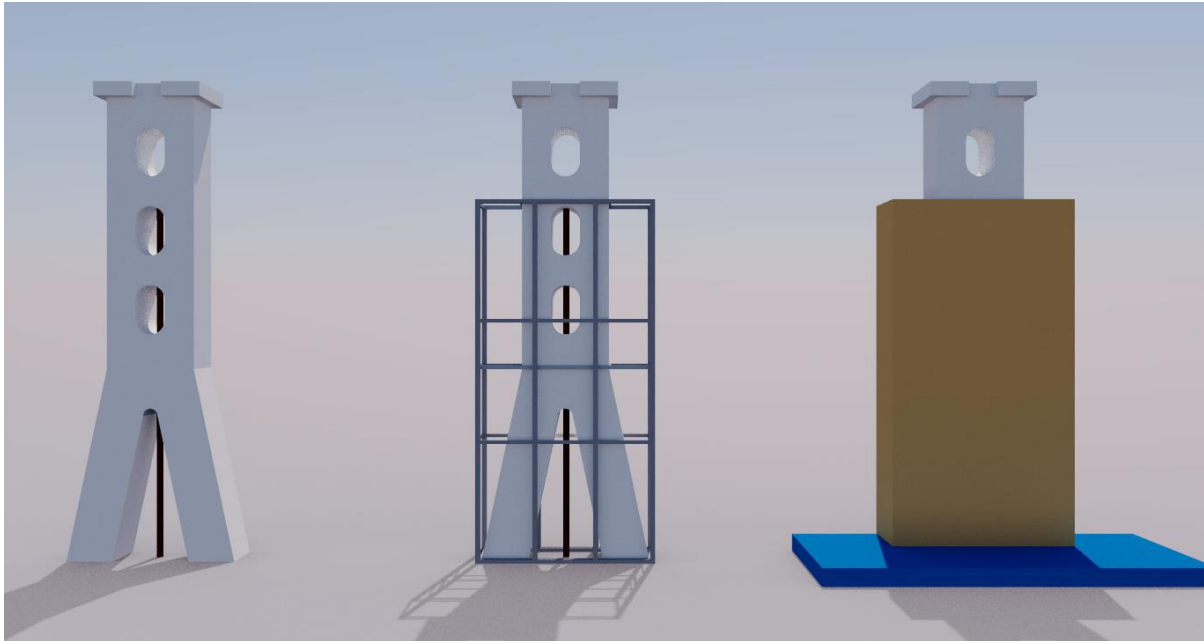
- 4.7.1 During the Fiction manufacturing process, each grip must be tested to meet international standards and endurance.
 - (a) All grips must bear the EU stamp and be certified, or any other internationally acceptable of standards.
 - (b) Fiction climbing holds must be made of Dannomite or similar material.
- 4.7.2 Dannomite must be used. It is the next generation of climbing hold material. It is a Polyurethane and Polyurea hybrid, which improves significantly climbing holds in wear resistance - better than all PU holds currently on the market. Very difficult to chip or crack more than 15 times stronger than polyester. Increased longevity, bright solid colours and improved UV resistance or similar

4.8 Sci-Bono training and staff handover

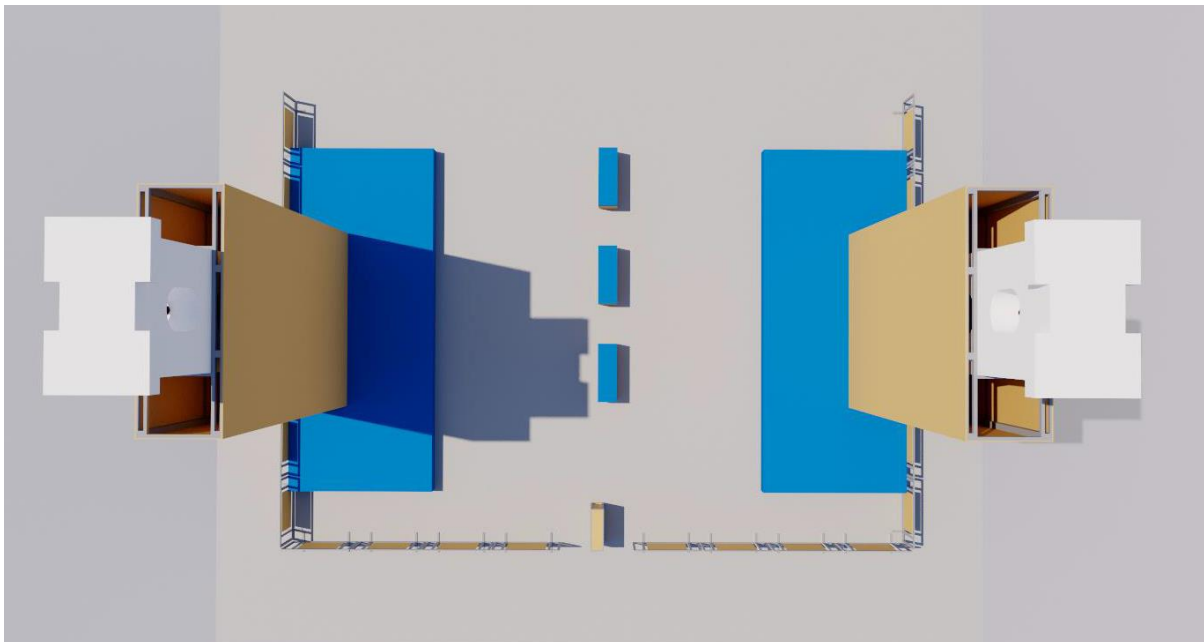
- 4.8.1 Once the climbing wall is established, the contractor must supervise and train the allocated Sci-Bono staff both on, and off-site. The practical off-site work experience empowers the staff, in gaining a wider 'hands-on' experience, of indoor climbing, until they are fully qualified to handle and supervise their own Sci-Bono climbing wall clients. The following must be include:
 - (a) Indoor climbing training sessions and lectures by South Africa's top coaches and trainers
 - (b) Fitness and health
 - (c) Equipment and gear safety checks and procedures
 - (d) First-hand managerial experience of dealing with both beginners and experienced climbers in a larger environment
 - (e) Maintenance and training refresher courses

4.9 Summary of Specifications

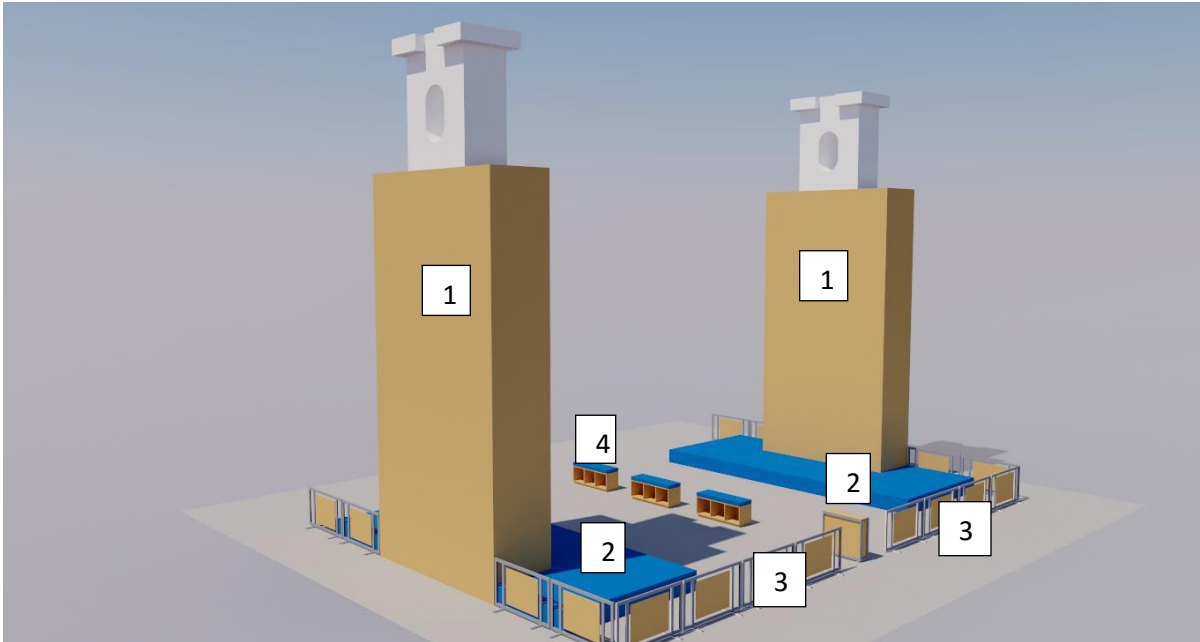
4.9.1 Drawing 1



4.9.2 Drawing 2



4.9.3 Drawing 3



4.9.4 The following are estimates of quantities and suggested specifications

No:	Description	Quantity	Total Cost
Climbing Wall			
1.	18mm WISA Birch Ply Boards	48	
2.	Coating	120	
3.	“T“ Nuts	2040	
4.	Sundries	360	
5.	Steel 100 x 100 x 2mm (6m Long)	20	
6.	Steel 75 x 25 x 2.0mm (6m Long)	18	
7.	Steel 75 x 50 x 2.0mm (6m)	5	
8.	Steel 50 x 50 x 3 (6m)	4	
9.	Anchors	8	
10.	Access (Scissor lift, Cherry picker or Scaffold)		
Climbing Equipment			
1.	Adults Helmets	10	
2.	Kids Helmets	10	
3.	Harnesses	24	
4.	Auto lock Carabiners	16	
5.	Click-up Belay/ Beaner	8	
6.	Rope (16m)	8	
7.	Red Block	8	
8.	Maillons	8	
9.	Gear storage units with division for each item	3	
10.	Climbing Safety Signage	15	
11.	Mats (Blue 350mm Thick) 3650 x 1800	2	
12.	Climbing Holds	360	
Climbing Graphics			
1.	Designer		
2.	Images		
3.	Print and App suitable robust material (In conjunction with wall contractor)	100 m ²	
Training			
1.	Training of staff by certified trainer (+- 20 staff)		

4.9.5 Technical capacity of the Bidder

- (a) Two climbing walls with grips/ climbing rout, Balustrade with gate, Safety equipment, Housing for safety / seating, and Artwork to cover walls
- (b) The Climbing Wall (in whole) must meet international safety standards
- (c) The successful company should have:
 - (i) Detailed knowledge and understanding of the Climbing wall business, manufacturing, supply, installations, training and operations
 - (ii) Track record in building and installing a world class climbing wall experience
 - (iii) Comprehension of the intricacies in regards to the construction and installation of an internal galvanized or powder coated steel frameworks
 - (iv) Specialised climbing wood panels
 - (v) Sealants and epoxies
 - (vi) Certified indoor climbing equipment sourcing and cost implications of imported premium grips and related support accessories
 - (vii) Climbing management experience in training and supervising Sci-Bono staff to handle operational aspects of project once 'live'
 - (viii) Safety awareness and fitness implications
- (d) Railing to compliment exiting balustrade in centre to enclose the climbing area (SS perforated plate) oversize base plate as no drilling into floor is permitted
- (e) Gate to be on oversize Base plate (No.3 on drawing No.3)
- (f) Mats to be 350 mm Laminated High Density Foam (High impact sports mats) (No.2 on Drawing No.3)
- (g) Storage / seating for all equipment to be included estimated size 600mm wide and 2000m long +_ 400m high x three units (No.4 on drawing No.3)

5. MINIMUM REQUIREMENTS

- 5.1. Bidders must supply Sci-Bono with the below-mentioned minimum requirements. Failing to provide these requirements shall constitute automatically disqualification.

Suppliers must submit 2 envelopes as follows:

Envelope 1:

- (a) A Formal Written Quotation (clear & unambiguous; including VAT);
 - (i) Quotation 1: Climbing Wall (including fencing, landing surface, seats/pigeon hole shelves)
 - (ii) Quotation 2: Climbing Equipment
 - (iii) Quotation 3: Art Works
- (b) Quotation form obtained from the Sci-Bono website

Envelope 2:

- (a) Comprehensive description and specification of the offered items. (no prices)
- (b) Proof of Company Registration
- (c) A valid Tax Clearance Certificate
- (d) B-BBEE certificate (IRBA or SANAS) or Sworn Affidavit
- (e) Fully completed SBD forms (SBD 4, SBD 8, SBD 9) obtained from the Sci-Bono website
- (f) Stamped Letter Confirming Bank Details
- (g) Proof of Business Address
- (h) References of Previous Projects/Services Successfully Completed
- (i) Engineer's Accreditation
- (j) Welder's Accreditation
- (k) Guarantee Letter for a period of 10 years
- (l) Project Plan (from date of award until final delivery, including training; with time lines for construction and commissioning).

5.2. REFERENCES

5.2.1. Bidders must further supply Sci-Bono Discovery Centre at most with two (2) contactable references where the bidder has delivered the similar services by simply stating the following:

- Name of client
- Position
- Contact telephone numbers
- Dates and Work performed

5.2.2. The failure to provide the above shall constitute a disqualification, as it shall be deemed that the bidder does not have the required experience

6. PRICING SCHEDULE AND DELIVERY

6.1 GENERAL PRICING FEE

6.1.1 The bidder must provide a clear and unambiguous price schedule (quotation) stating Value Added Tax (VAT) implications, if any

6.1.2 All disbursements and related costs shall be provided separately, if any, and may be negotiated during the project implementation period

6.1.3 Only unconditional discounts shall be accepted. All discounts granted must be specified on the Quotation Form

6.1.4 Note that the price must be fixed and will not be subjected to change based on foreign exchange fluctuations

7. CONDITIONS FOR SHORT LISTING

- 7.1 Proposals submitted will be evaluated using a system Method 4 (Financial Offer, Quality and Preference) in line with Section 6.3 (Table 6.3.1: Standard Tender Evaluation Method) prescribed by Sci-Bono's Supply Chain Management Policy
- 7.2 All bids shall be subjected to the preliminary evaluation process. Bidders who do not meet the minimum requirements (item 5) set by this RFP shall automatically be disqualified and shall not be evaluated for functionality, price and preference
- 7.3 Service providers are required to submit all documents specified on item 5.1 of this RFP, otherwise failure to submit all documents shall constitute disqualification
- 7.4 SCM shall apply newly approved and affected Regulation 4 of Preferential Procurement Policy Framework Act, 2000: Preferential Procurement Regulations, 2017) to assess the market for completion pricing in case quotations submitted varies.

8. PRICE EVALUATION

- 8.1 The proposals / bids shall be evaluated using the 80/20 preference point scoring system, in terms of Regulation 4; of Preferential Procurement Policy Framework Act, 2000:Preferential Procurement Regulations, 2017.

$$PS = 80 \left[1 - \frac{Pt - Pmin}{Pmin} \right]$$

Where:

Ps = Point scored for comparative price of bid under consideration;

Pt = Comparative price of bid under consideration; and

Pmin = Comparative price of the lowest acceptable bid.

9. POINTS FOR B-BBEE

9.1 An 80/20 preference points scoring system (B-BBEE points) shall apply and shall be awarded as follows:

B-BBEE Status Level of Contributor	Number of points
1	20
2	18
3	16
4	12
5	8
6	6
7	4
8	2
Non-compliant contributor	0

10. AWARD CRITERIA

- 10.1 The bidder with the highest number of points shall be awarded the contract, unless there are factors that may lead to a different decision
- 10.2 In the event of two or more bids score equal points, the bid will be awarded to the bidder scoring the highest points on B-BBEE or preference.
- 10.3 However, in the event the two or more bids have equal B-BBEE points, the tender will be awarded to the bidder with the highest points on functionality, if applicable
- 10.4 Qualifying proposals will be evaluated according to the following criteria:
- Price: 80%
 - PDI / BEE rating 20%
- 10.5 Prequalification criteria:
- Level 1 to Level 3 B-BBEE Contributors; or
 - Exempt Micro Enterprises (EME); or
 - Qualifying Small Enterprises (QSE)
- (In terms of Regulation 4; of Preferential Procurement Policy Framework Act, 2000: Preferential Procurement Regulations, 2017)

11. CLOSING DATE AND TIME

- 11.1.1 A **compulsory briefing meeting** will be held on the **17 October 2017 at 11h00**, Sci-Bono Discovery Centre, Cnr Miriam Makeba & Helen Joseph Streets. Bidders who do not attend this briefing meeting will be disqualified.
- 11.1.2 Submissions should be hand delivered by on or before **23 October 2017 at 12h00**, deposited into the tender box marked **“PROCUREMENT OF SUPPLY, DELIVERY AND INSTALLATION OF A “TURN KEY” CLIMBING WALL”**. **NO LATE PROPOSALS / BIDS shall be accepted**. Late proposals / bids shall be immediately returned to the bidders. All documents must be to Corner of Miriam Makeba & Helen Joseph Street, Johannesburg, 2107.
- 11.1.3 All correspondences shall be done by e-mail tenders@sci-bono.co.za ; no telephonic correspondences shall be done before and after the closing of bid. Bidders may be informed in writing of the outcome of the bid adjudication process.

12. DISCLAIMER

- 12.1 Sci-Bono reserves the right to accept or reject any variation, deviation, tender offer or alternative offer and may cancel the tender process and reject all tender offers at any time before the formation of a contract.
- 12.2 Sci-Bono reserves the right to award a contract to multiple service provider(s) should it be deemed necessary.
- 12.3 Sci-Bono reserves the right not to appoint a provider, to accept and/or award the whole or any portion of the tender, and is also not obliged to provide reasons for the rejection of any tender.
- 12.4 Sci-Bono will not incur any liability to a tenderer for such cancellation and rejection, but will give written reason for action upon request to do so.